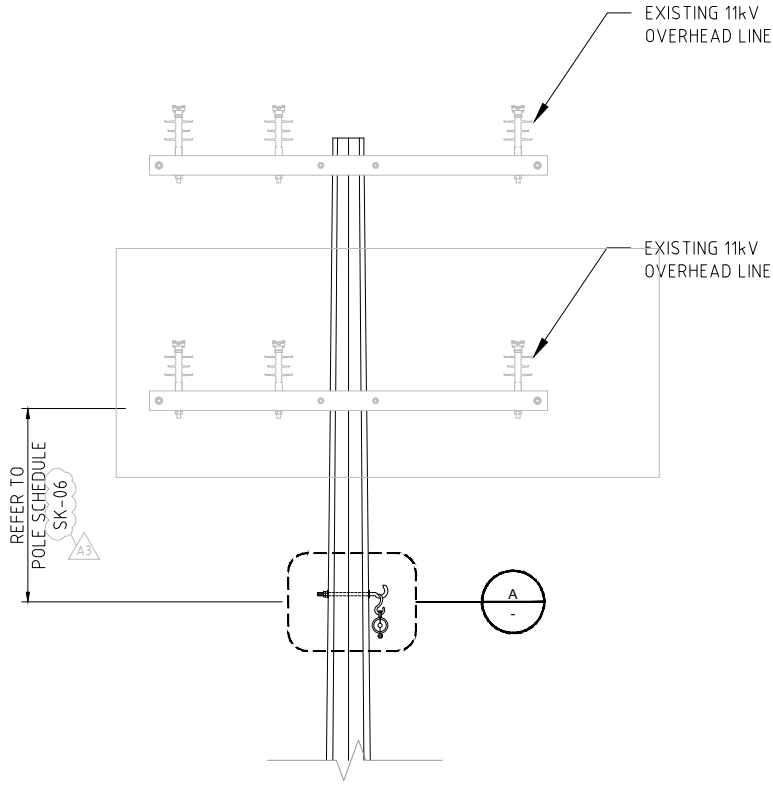
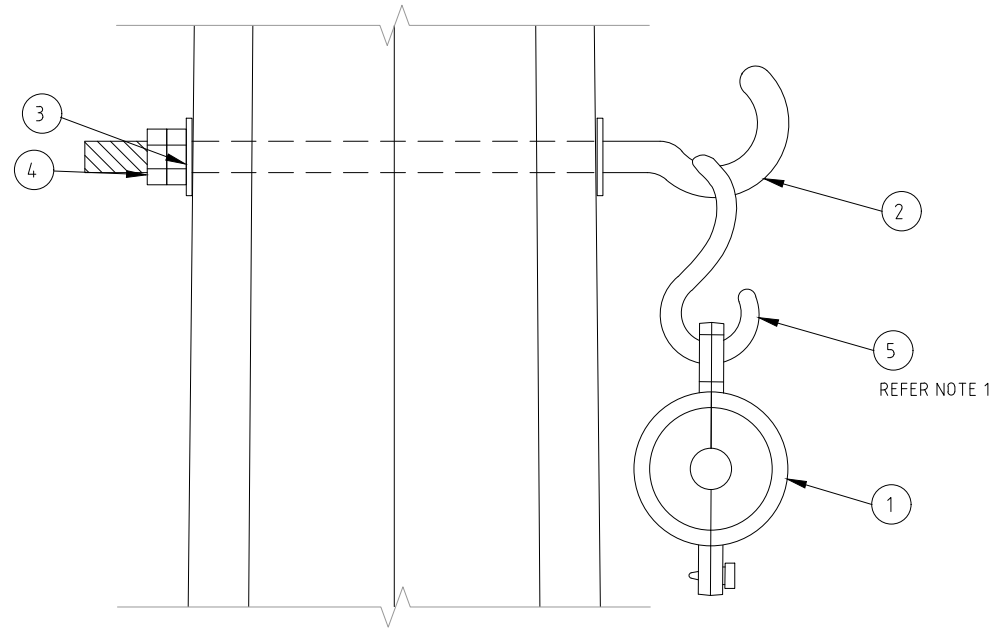


TRANSVERSE FACE
SCALE 1:20



LONGITUDINAL FACE
BOLTED ASSEMBLY
SCALE 1:20



DETAIL A
SCALE 1:2

MATERIALS LIST - BOLTED ASSEMBLY		
TAG NO.	ITEM	QTY
1	FIBERLIGN SUSPENSION CLAMP	1
2	M16 HOOK BOLT	1
3	M16 WASHER	2
4	M16 NUT	2
5	8kN WEAK LINK (SEE NOTE 1)	1

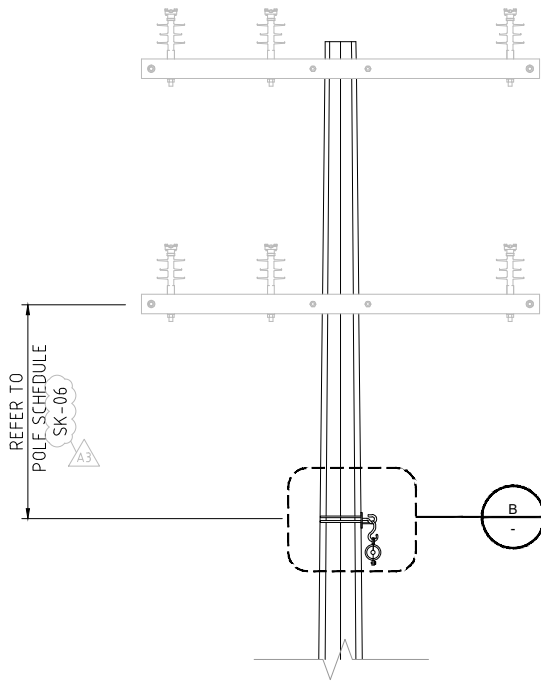
MATERIALS LIST - BANDED ASSEMBLY		
TAG NO.	ITEM	QTY
6	16mm GALV. HEAVY DUTY HOOK PLATE	1
7	19mm STAINLESS STEEL BAND & BUCKLE	2
8	FIBERLIGN SUSPENSION CLAMP	1
9	8kN WEAK LINK (SEE NOTE 1)	1

REFERENCE DRAWINGS:

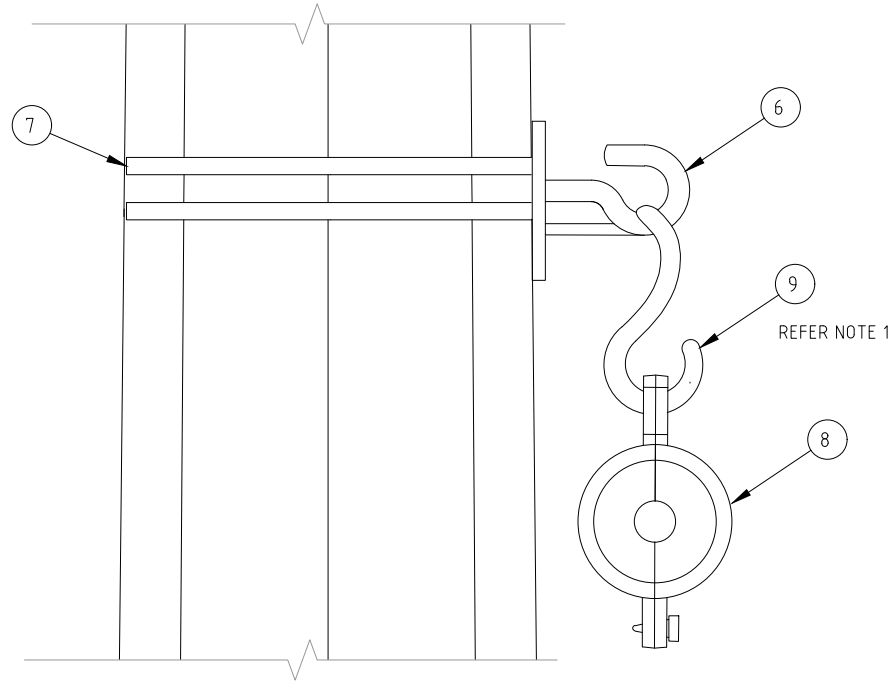
SK-06 ADSS CONSTRUCTION SCHEDULE
SK-12 ADSS PROJECT MATERIAL SCHEDULE

NOTES


- REFER TO POLE SCHEDULE FOR WEAK LINK REQUIREMENT.
- FOR BAND OR BOLT APPLICATION REFER TO EASTERN NETWORK ADSS LINE DESIGN POLE SCHEDULE.
- WASHER IS ONLY REQUIRED FOR BOLT APPLICATION.
- 11kV DOUBLE CIRCUIT SHOWN IS TYPICAL, ADSS INSTALLATION MEASUREMENT IS TAKEN FROM LOWEST CIRCUIT CROSSARM.
- REFER TO MATERIAL SCHEDULE (SK-12) FOR THE RECOMMENDED STOCK CODE ITEM.



LONGITUDINAL FACE
BANDED ASSEMBLY
SCALE 1:20



DETAIL B
SCALE 1:2

										CONTRACTOR	 SolomonPower <i>energising our nation</i>	DESIGNED	KC	24.07.2020	PROJECT NAME			DRAWING No.		
												CHECKED	JD	24.07.2020	ADSS LINE DESIGN ON EXISTING 11kv LINE - EAST HONIARA			SK-01		
												DRAWN	KC	24.07.2020				PROJECT No.		
												CHECKED	JD	24.07.2020	PROJECT DESCRIPTION		DRAWING TITLE			
												APPROVED	IK	24.07.2020	EASTERN NETWORK ADSS LINE DESIGN		ADSS SUSPENSION CLAMP BAND CLAMP OR BOLTED ASSEMBLY			
												A3	SCALE: AS SHOWN					SHEET	REVISION	
																			A3	